



L'ARCHE® London Gathering Place
BUILDING COMMUNITY TOGETHER



A CAMPAIGN FOR L'ARCHE LONDON

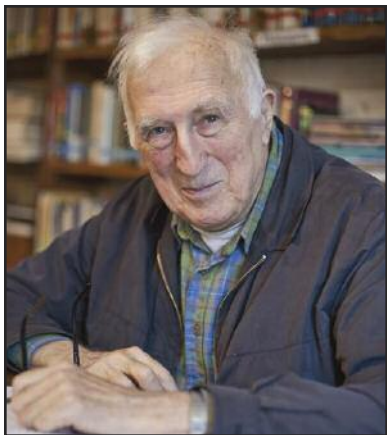
JOIN US FOR THE JOURNEY...





L'Arche Around the World





THE FOUNDER OF L'ARCHE

Jean Vanier

L'Arche in London Ontario, people are speaking about you, they are saying what a wonderful community you are, these little foyers where people are happy, rejoicing, where people with disabilities are being revealed as people with importance.

Disability, we are all "disabilitised".
We all have difficulties it's evident.

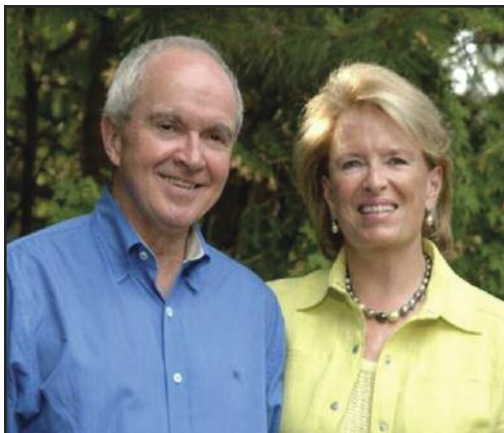
We all have our handicaps interior or exterior. So community, the community of L'Arche London is a wonderful community but it is going to be even more wonderful when you have your community gathering place because a community, it is not just like houses but we have to create community, be together, reveal to each other the beauty of what it means to be human being, so congratulations that you had this wonderful idea of a community gathering place: not only that but you need obviously work places, because it is not just for people who go out to workshops, but people will get more weaker, people will have difficulties, you won't be able to be going out to workshops far away, you need places where there can be places where people can do beautiful things together, so CONGRATULATIONS L'Arche in London.

It is going to be wonderful not just your 3 foyers, but it is going to be even more wonderful when you have this wonderful gathering place and when you have these little workshops which will be beautiful, so congratulations and I encourage anything that can be in that way because what is important is to build a beautiful community and that is what you have started and that is what L'Arche London is but it will become even more beautiful.

"We human beings are all fundamentally the same. We all belong to a common, broken humanity. We all have wounded, vulnerable hearts. Each one of us needs to feel appreciated and understood; we all need help."

- JEAN VANIER





L'ARCHE LONDON'S GATHERING PLACE AND ITS VITAL IMPORTANCE

A Message from the Honorary Chairs

Arthur and Sonia Labatt

Our relationship with L'Arche London traces its origins to the fall of 1968 when we first met Jean Vanier in France, a few months after we had moved to Paris. My mother, who was a close friend and a great admirer of Madame Vanier, was visiting us at the time. She told us that Madame Vanier's son, Jean, had opened a home near Paris four years earlier for adults with intellectual disabilities.

We got in touch with Jean and he accepted our invitation to join us for afternoon tea in our tiny apartment. He was a wonderfully gracious and modest man who believed deeply in what he was doing. The first of his communities in Canada opened the next year. We supported the international work of L'Arche for a number of years, but it was 25 years after our first meeting with Jean that the Chair of L'Arche Canada invited us to Richmond Hill to show us how a L'Arche community really functions. We were extremely impressed and touched.

There are hundreds of individuals in the London region with intellectual disabilities who are on waiting lists for urgently needed day programs. We were delighted to learn that L'Arche London is building its Gathering Place to accommodate many in the London area. Each of us has a unique gift and the intellectually disabled are most happy when they are given opportunities to reveal theirs in a secure and nourishing environment. The L'Arche London Gathering Place will offer a variety of daytime activities and programs that are designed to reveal those gifts.

In addition to helping people, the L'Arche London Gathering Place's site and building designs will enhance the natural beauty of its location, and protect the environment at the same time; all of which is happening right here in the London area, a city that is very special to both of us. We have a strong desire to help in any way we can.

We are delighted to be the Honorary Chairs for the L'Arche London Gathering Place campaign, not only because it is such an important and responsible project that is so beneficial to the London community, but because it embodies the beautiful vision of society of Jean Vanier, a truly great humanitarian.

L'ARCHE – PART OF A GLOBAL FAMILY

Who We Are and Where We Started

Home life is the heart of each L'Arche community. Community members live, work, pray and celebrate together, sharing their joys and sorrows, challenging and forgiving each other, just as a family. Those who live in L'Arche enjoy a simple lifestyle, one that gives priority to relationships.

L'Arche is a place of welcome. Our communities are made up of both young and old members who come from diverse backgrounds, different faith traditions and many different abilities.

L'Arche celebrates the unique contribution that each individual or tradition has to offer.

"Whatever their gifts or their limitations, all people are bound together in a common humanity."

- L'Arche Charter

HOW L'ARCHE BEGAN

French for "The Ark," L'Arche symbolizes both the security and the challenge of new beginnings.

Jean Vanier established the first L'Arche home in France, in August of 1964. He wanted the home to model an alternative to the often appalling institutional conditions in which many adults with developmental disabilities lived. It was a small, loving and dignified home in which he shared life with Raphael and Philippe, two men with developmental disabilities. Together, they founded the first L'Arche community, a compassionate community where people of all backgrounds and abilities become more human.

L'Arche is now an international federation of more than 140 communities in 40 countries, each with its own local culture and history, yet each centered on the gifts and needs of women and men who live with a developmental disability (core members) and the assistants who share their lives together.

THE NEED FOR L'ARCHE - BOTH HOME AND ABROAD

More than a billion people around the world live with some form of disability. Two hundred million of these people face enormous obstacles just trying to function from day-to-day. Given the aging of the population and the rise in the incidence of chronic diseases and mental illness, in years to come disabilities will become the cause for more and more concern.

- World report on Disability, World Health Organization (WHO) -





THE NEED IS GREAT IN OUR LONDON COMMUNITY

*Toinette Parisio,
Executive
Director, L'Arche
London*

It is my privilege to invite you to join our journey of building community together, friends with and friends without intellectual disabilities, building intentional relationships together in the context of the L'Arche London Gathering Place. We walk in the footsteps of our founder, Jean Vanier who in 1964 opened the first L'Arche home in France. Jean Vanier is a humanitarian, Canadian, son of the late former Governor General George Vanier.

Almost 50 years later we have an international federation of communities around the world.

In Canada we have 29 L'Arche communities in 8 provinces, 9 of them in Ontario. All of the communities are driven by the same dream, all of them celebrating the unique gift that each member is, the unique contribution that each one has to make.

The core members, members with an intellectual disability who are at the heart of community, enrich our world by their presence.

Also they contribute by their work and art. During a focus group for our community, members have helped us identify the need for a place of our own. They expressed all their needs to have a place to go to, a place to welcome others, friends who do not have a place to go to. They have been engaged about what they would like to see happen in the building we will build. One of our members mentioned the need to decorate it with our art, someone else to offer tea and lunches to others in the building. An assistant mentioned all the time wasted daily, loading and unloading vans to prepare the crafts, the paintings, the karaoke machine, the musical instruments... The L'Arche London Gathering Place will answer those questions and allow us to invite more to join us for activities.

A woman who befriended us years back, believed in the vision and mission of L'Arche. At her death, she left a bequest which allowed us to purchase land and keep the dream alive. Since then we have hired the architect, have had the renderings firmed up, and now have the consultant for the capital campaign.

We invite you to build a caring society by joining us on our journey of building the L'Arche London Gathering Place which will be a landmark on the west entrance of London coming from the 401 and 402. The support of the London community, of numerous community groups, of local neighbours is a sign of affirmation. We need you to help us

alleviate the needs of the population with intellectual disabilities. The waiting list is incredibly long.

L'Arche London – THE HISTORY

In 1991, a small group of people with an interest in L'Arche gathered to lay the groundwork for the founding of a L'Arche community in London.

In August 1997, we purchased our first home, Cana. A second home, Jubilee, opened in March 2003, and our most recent home, Bethany, opened in January 2008.

Currently, there are 12 core members who form the heart of the L'Arche community. Day programs provide services to L'Arche core members in activities such as music, pottery, art, drama, dance and life skills. In addition, in the context of our weekly and monthly L'Arche programs, we invite between 50 - 70 people with intellectual disabilities from the greater London area to participate in programs such as music club, potlucks and other community events. These activities provide support and enrichment to the lives of individuals, families and friends in our greater community. All activities and supervision are conducted by 33 full and part-time staff and 45 volunteers.

L'Arche London –

WHERE WE ARE TODAY

The Current Situation

L'Arche London's facilities and activities currently consist of:

- three homes which house the organization's core members and assistants;
- administrative office - a leased space;
- recreational or 'day' programs, which are carried out at facilities which L'Arche London negotiates with churches or other social service providers;
- other recreational activities, such as the monthly community dinner, which are held at borrowed space.

Because of this insufficient situation, activities for core members and day participants are not optimized. Some examples:

- program supplies and equipment, such as crafts and musical instruments, cannot be stored or be readily available for ongoing day program use;
- food cannot be stored or prepared in a dedicated kitchen as part of day programs;
- preparation and clean-up on each occasion compromises real program time with core members;
- time for transportation to and from other facilities compromises quality time for core members day programs which could otherwise be provided in a dedicated facility in close proximity to the three homes;
- core members cannot feel 'at home' in different environments - a place to call their own and feel completely welcoming, comfortable, safe and at ease;
- broader and more creative and innovative programs cannot be designed for core members to

exercise and realize their gifts in the absence of a dedicated and well-supplied facility e.g. music, dancing, crafts, cards, pottery, woodworking and candle-making;

- The office and administration is in a separate location.

A social centre which is welcoming and accessible to the public - as opposed to a residence - will more effectively serve as a public facility to engage volunteers who are drawn to L'Arche London's mission and work.

For L'Arche London staff a dedicated program facility would provide opportunities to design and deliver more creative programming in a way which will provide L'Arche London with an opportunity to more effectively attract and engage staff as well as volunteers.

A separate facility would provide an opportunity for a dedicated administrative office which is still connected to the operations of the organization.

L'Arche London –

OUR VISION FOR TOMORROW

We desire to be a strong and confident community that continues to 'enlarge our tent', aware that we have something beautiful to share and that we need the friendship and support of others.

A priority in L'Arche London's mandate is:

To create a Community Gathering Place with room for:

- A day program that responds to the varied needs of members
- Offices and a meeting space to support homes, program, community life
- Community worship, meetings and celebrations
- A compassionate gathering place for family, volunteers, staff and members
- A quiet, sacred space for prayer and contemplation
- Expanding the provision of complementary therapies
- Assistant time away and beauty in art and gardens

I'm a core member at Jubilee House in L'Arche London. I've been here for 3.5 years. I first met Toinette, the Community Leader, in a Psychiatric hospital. I didn't like the hospital. I couldn't verbalize at that time, but now I can express my feelings appropriately. Toinette helps me communicate with my dad who speaks French.

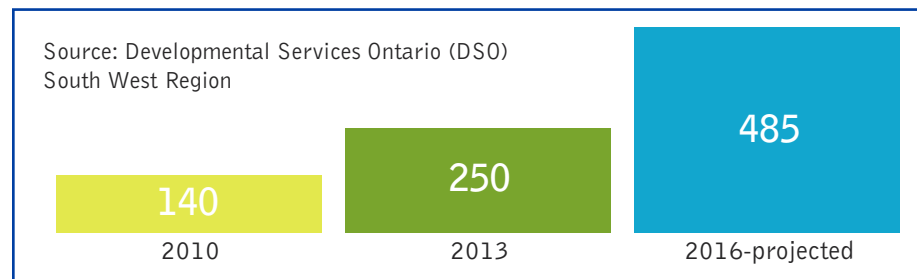
I work in the office every 2nd Wednesday, and I really hope I can stay in the community for a long time.

I like having my birthdays and going to hockey games. My 30th birthday party was a big one, and I hope to have some more big birthday parties here with L'Arche London.

Melissa Lavallee, Core Member of Jubilee



WAITING LISTS FOR DAY PROGRAMS



The Need is Great in our Community

Community Needs Assessment

In early 2012, the professional services of The Dennis Group Inc. were retained to embark upon an in-depth needs assessment and readiness study for L'Arche London. The scope of this analysis included stakeholder interviews, leadership and volunteer support requirements, campaign strategies, timing, communications and many other key campaign elements. Based on their findings and subsequent recommendations, the L'Arche London Board of Directors in late 2012, endorsed and formally approved to systematically proceed into a capital campaign.

This process entails a tiered approach including: the initial preparatory and planning phase, the development and implementation of the campaign capital plan, the public launch, and the final leg of our journey – the successful opening of the “ L'Arche London Gathering Place”.

A MESSAGE FROM THE FAMILY OF A DAY PROGRAM PARTICIPANT

We are very happy to have re-connected with L'Arche London in our recent move to London, with our daughter Brenda. We are great supporters of the L'Arche philosophy and are very familiar with L'Arche Communities across Canada. We flew to London from Saskatoon 15 years ago for the opening of your 1st L'Arche home.

We are excited about your plans for the L'Arche London Gathering Place and the fact that it could expand opportunities to Brenda and our family. The timing for this expansion is excellent, as the Ministry of Community & Social Services continues with the implementation of the transformed funding model, more and more families will be seeking programs such as you plan in your new center. More importantly, the expansion of the L'Arche Philosophy through Community Outreach will be a blessing to families and family members with developmental disabilities who now can purchase supports and services directly.

We will continue purchasing supports and look forward to our involvement in the many opportunities including: training and support for families, new and expanded day programs, attending social, spiritual, and recreational activities , and specific life skill training such as meal preparation, buying groceries, organizing, and other daily planning activities.

We are very excited about this much needed facility in our London community and support L'Arche London in their future endeavors.

Marge & Rick McCabe, London

SUSTAINABILITY OF THE NEW L'ARCHE LONDON GATHERING PLACE

The new L'Arche London Gathering Place will relieve the pressing demands placed on the organization to accommodate the needs of developmentally challenged individuals and their families in the London community. The L'Arche London Gathering Place will be the first home to many daytime activities in a PERMANENT location. This will enable participants to utilize their creative, spiritual, and intellectual gifts in a caring, collaborative, and accepting environment - much like a home like setting.

Centralization of both our administrative and day program functions facilitates the opportunity to deliver support to our community more efficiently. A significant portion of the projected annual operational costs will be absorbed by hard dollar savings in the reallocation of key functions. This includes the elimination of the leased offices on Nottinghill Rd. and the on-going financial burden of renting community facilities.

In addition, greater efficiencies will be realized in both the areas of transporting and human resources. Currently, one van can use up to 3 tanks of gas on a weekly basis. Staff time will be more effectively utilized by dramatically reducing time spent setting up and tearing down equipment and transporting of program and food supplies.

On the revenue generation side, we anticipate any remaining increased operational costs will be defrayed by new "on site" fundraising events and sales, community rentals, directed donations and other future revenue opportunities identified by the resource development committee.

LEADERSHIP IN ENGINEERING AND ENVIRONMENTAL DESIGN (LEED) CERTIFIED

The L'Arche London Gathering Place will be a showcase **green building** in the community. A holistic approach has been taken in the design that will bring environmental and financial operating costs to an absolute minimum. This starts with triple glazed high performance windows and walls insulated beyond building code. Simple rain barrels provide water for landscaping and gardening while toilets will be flushed with rain water from an innovative low cost cistern. While the building is engineered with a minimalist's mindset to avoid maintenance costs, the building will also be more comfortable than similar new buildings. This includes complete room by room temperature control, heated floors in sections of the Community Hall, daylight, and views to the beautifully landscaped site. The building will be constructed and cleaned using only low toxicity products and materials. The finishes will have an earthy feel with generous use of natural materials. We have a wonderful site and will take full advantage with a nature path winding through native gardens and the forest.

The consultants have donated much of the time costs involved in obtaining certification.

We see this as a building which our members and the community are going to be very proud of and enjoy to a great degree.

Randy Van Straaten, P.Eng.

LEED AP BD+C Building Science Consulting Inc.

The Campaign Goal

In order to achieve our dream, a 2.5M campaign goal was established to fund the project. This amount will include all costs in the project.

Proposed Project Costs:

Construction	\$2,000,000
Furnishings	150,000
Professional fees and other costs	350,000
Total Cost	\$2,500,000





L'ARCHE® London Gathering Place

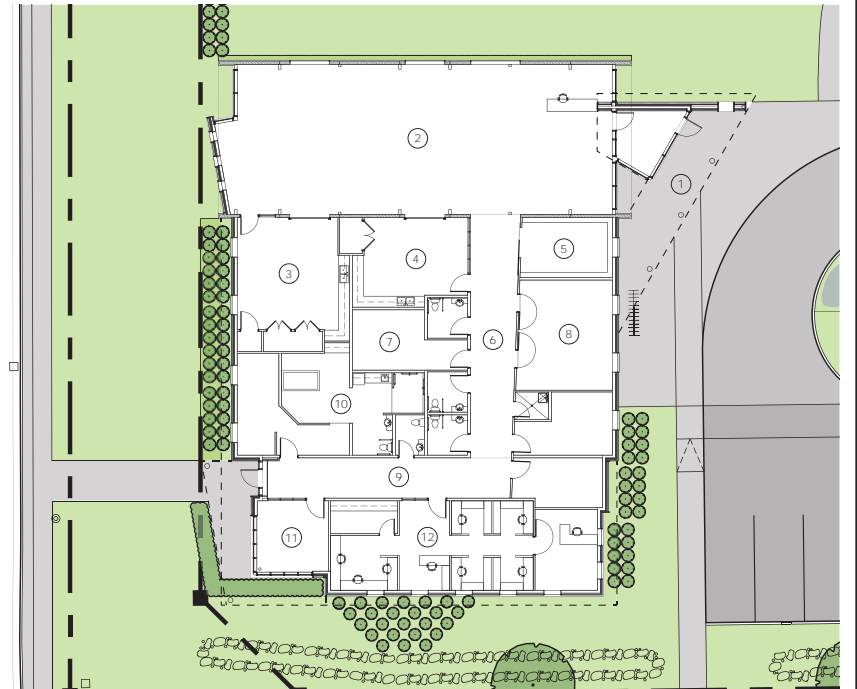
BUILDING COMMUNITY TOGETHER



THE L'ARCHE LONDON GATHERING PLACE

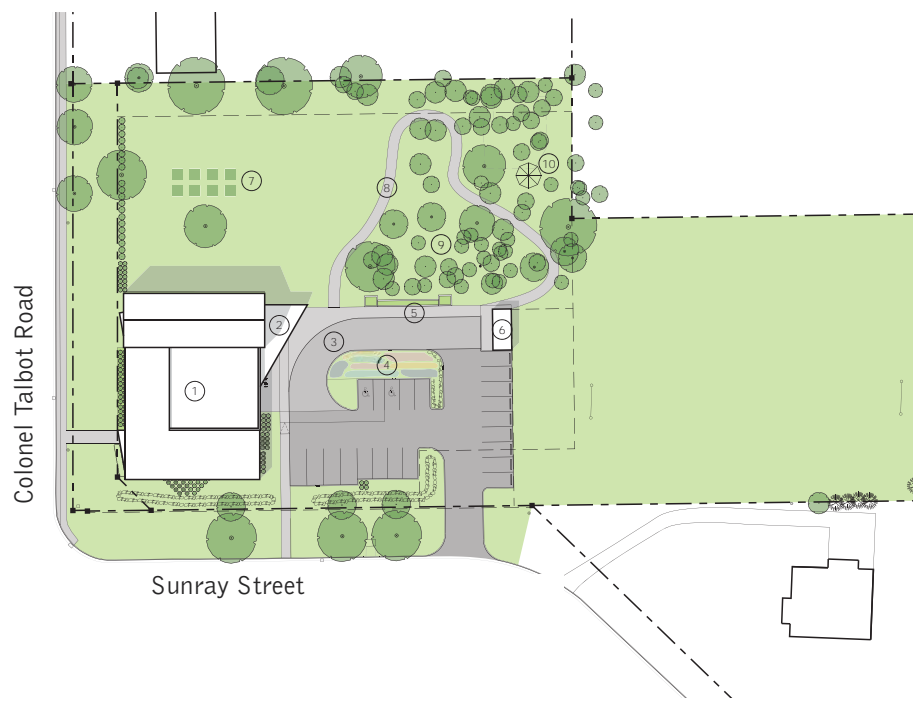
1. THE PORCH
2. COMMUNITY HALL
3. CRAFT STUDIO
4. CREATIVITY ROOM
5. PERSONAL STORAGE
6. THE MARKET
7. SNOEZELEN ROOM
8. KITCHEN
9. THE GALLERY
10. WELLNESS ROOM
11. LIBRARY
12. L'ARCHE LONDON OFFICE

Floor Plan



THE L'ARCHE LONDON GATHERING PLACE

1. L'ARCHE COMMUNITY GATHERING PLACE
2. THE PORCH
3. THE PIAZZA
4. ECO GARDEN
5. L'ARCHE GARDENS
6. POTTING SHED
7. COMMUNITY GARDEN PLOTS
8. NATURE TRAIL
9. THE GROVE
10. THE GAZEBO



Site Plan

THE L'ARCHE LONDON GATHERING PLACE

Goals for the New Facility



- Create spaces where our core members grow in confidence, develop positive self esteem and are engaged and inspired through art, music, drama and crafts.
- Embrace more people with intellectual disabilities who are waiting for services. In the London area alone, more than 250 people are on waiting lists for day

programs. Within the next few years, this number is expected to increase with insufficient meaningful daytime activities available. Many of these people are presently in the care of aging parents. L'Arche London's goal is to create spaces and expand our services to meet these needs in London.

- Expand our program offerings to accommodate the needs of the London community. Many of our programs require unique working spaces. We also envision the inclusion of a Snoezelen room, a soothing and stimulating environment, specially designed to deliver stimuli to various senses, using lighting effects, colour, sounds, music and scents.
- Provide a social centre which is welcoming and accessible to the public and useful for the many activities of L'Arche London which engage our large extended community.
- Create exterior grounds that will provide a piazza to enjoy the outdoors, walking paths for exercise, a gazebo for picnics and accessible gardens.
- Reduce operational expenses through the Green architectural components of the building which will enable us to save on energy costs. Our new facility will also allow us to reduce mileage given the proximity to our three homes, as well as eliminate rental fees.
- Design and deliver more creative programming in a way to more effectively attract and engage staff and volunteers.
- Provide opportunities for office personnel to be integrated into the mission of the organization.

L'ARCHE LONDON REACHES OUT BROADLY

Hollee Card, National Coordinator, L'Arche Canada

L'Arche is a way of life, a message, of being in the world where we see and believe that everyone has a gift. Everyone has the ability, it is the label sometimes that can limit people, preventing them from using their unique gifts.

Many countries are reaching out in their own way, but L'Arche London has managed in spite of its littleness, or maybe because of its littleness, to reach out very broadly to society in London. The new L'Arche London Gathering Place will enable the community to build upon the past and continue to be creative to meet the future needs of London.

I think what you are doing in London is really a model for the rest of the communities in Canada.

"L'Arche London has been a long time member of Pillar Nonprofit Network demonstrating their commitment to being a strong and effective nonprofit in our community."

Warm regards,

Michelle Baldwin

Executive Director, Pillar Nonprofit Network

NAMING OPPORTUNITIES

At the L'Arche London Gathering Place there have been a number of naming opportunities identified, both in the new facility, and specific items which are part of the overall master landscape plan.

Some of the examples include ie: the craft studio, wellness room, kitchen facility, community hall, and the L'Arche gardens.

Naming opportunities provide a respectful honour to an individual, family member, or a way to celebrate the life of someone special. Your important support of today will enable L'Arche London to build a foundation for tomorrow and years to come.

The voice of our
day program
participants...

The voice of our
day program
participants...



**dancing to the
beat of this
community**



- bringing laughter

- sharing faith

- hope



**proud to have
our space**

meet new
friends



a place for
music, crafts,
art, cooking,
and sharing





BUILDING COMMUNITY TOGETHER

David McKane

*President of the Board of Directors,
L'Arche London*

While growing up I had an aunt and uncle who were physically challenged. They lived in a small bungalow that was wheelchair accessible. Whenever the

family gathered Uncle Lou and Aunt Mary were always included. There was never any question. They were family. Jean Vanier had a similar experience when he began L'Arche at Trosly-Breuil in 1964. Jean and Raphael and Philippe were family, caring for and sharing with one another. By doing so they were demonstrating a different way of being in community. L'Arche London is an extension of that dream.

Building.

- L'Arche London has long dreamed of having a building that would allow us to meet some of the needs of the more than 200 persons on our waiting list;
- a building that would allow/permit us to extend our services to the wider community;
- a building that will provide a central gathering place for our community.

Community.

- L'Arche London creates a community in which the able and the disabled contribute to our mutual growth;
- a community that believes in the growth and involvement of persons with disabilities;
- a community that seeks to transform society by offering our society their gifts and values;
- a community that is open, inclusive and welcoming/affirming of all.

Together.

- You can help us build such a special place.
- You can enable us to create such a community.
- Together we can create/build a gathering place and create such a caring community.
- Together we can make a daily difference in Londoners' lives.
- Together we can create a legacy of compassionate caring and an inter-active community of acceptance and love.
- This is an exciting time for L'Arche London, a time of growing and sharing with the wider community. We step out in faith and hope and with love. Please join us on the journey.





HOW YOU CAN SHOW YOUR SUPPORT

Garry Dodman, Campaign Chair

In the twelve years I have been associated with the L'Arche community the one thing I've learned is that many people are attracted to the value of inclusion demonstrated in daily life of L'Arche. Whatever our disability, people

come, are welcomed, and are transformed by their experience of community. That is proven by the growth from the first community founded by Jean Vanier in 1964 to today where there are 140 plus communities around the world about to celebrate 50 years of building communities together.

Here in London, our growth has brought us to the point where we are ready to honour that tradition and to answer the call of the community to build the L'Arche Gathering Place; a centre that nurtures the gifts of people with developmental disabilities. It's those gifts that are the cornerstone of L'Arche.

The centre will be located within a few minutes' drive of our existing homes and is on a city transit route. The 2.5 acre property will include a number of features such as gardens and a natural wooded area. The 8000 square foot building will include facilities for day programs such as pottery, paper crafts, kitchen skills, and physical activities such as dance. To honour our commitment to the environment, the building design is to LEED standards for energy efficiency and is a registered project with Canadian Green Building Council.

It is very exciting to welcome Arthur and Sonia Labatt as our Honorary Chairs for the campaign. Their leadership in our community is well known and respected. The fact that they have been associated with L'Arche for many years and now have chosen to support this vision of the L'Arche London Gathering Place further assures me of the importance of this project.

L'Arche has an important impact in our society; we build compassion and inclusion that brings many people, especially young people, who are transformed by their experience. All of us take that learning and it impacts our daily lives.

So for these reasons I'm asking you to consider your role as a builder of this community because with you we can honour the vision that Jean has for a compassionate society. Please consider how you can participate in this project and contact me through the office – our contact information is on the back cover.

I invite you to visit our web site for more information and news, and join the journey.





A rendering of the L'Arche London Gathering Place





Mission Statement:

We are people, with and without intellectual disabilities, sharing life in communities belonging to an International Federation. Mutual relationships and trust in God are at the heart of our journey together. We celebrate the unique value of every person and recognize our need of one another.

CAMPAIGN CONTACT INFORMATION

L'Arche London

4056 Meadowbrook Drive, Unit 121, London, ON N6L 1E3

Call - 519-652-9778 x 226

www.larchelondon.org

*Donations in support of L'Arche are gratefully received and are fully tax deductible under
Charitable Tax Registration Number 89183 5241 RROOO1*

